



## Installation and Playing Instructions

---

# **AMADEUS Style Performance Vol. 2**

for

# **SEMPRA**

[www.boehm-organs.com](http://www.boehm-organs.com)

## AMADEUS Style Performance 1 for SEMPRA - Installation and Playing Instructions

Version 1.00

Art no. 59136

Last update: 19.11.2019

The information contained in this documentation may be changed without notice. announcement and are subject to change without notice by Keyswerk. Musikelektronik GmbH does not represent an obligation.

Changes of technical details compared to the descriptions.  
The information and illustrations in this manual are subject to change without notice.  
The Keyswerk Musikelektronik GmbH cannot be held liable for program errors and for incorrect information in the documentation and its consequences assume no liability.

© Keyswerk Musikeletronik GmbH 2019  
All rights reserved

Responsible for the content:  
KEYSWERK Musikelektronik GmbH  
Warbersche Str. 32  
31675 Bückeberg  
Phone: 05722 - 905088  
Fax: 05722 - 287555  
Internet [www.boehm-orgeln.de](http://www.boehm-orgeln.de)  
E-mail [info@boehm-orgeln.de](mailto:info@boehm-orgeln.de)

## Content

General information .....	4
requirements.....	4
Installation.....	5
Where can I find the ASP 2 data? .....	6
Overview AMADEUS Style Performance 2 .....	7
STYLES (Firm-Style-Banks 10 and 11) .....	7
SONGS (Firm-SONG Bank 16: ASP2) .....	8
ASP Sounds (in Soundbank 110):.....	9

## General information

The style package **ASP 2** continues the successful **AMADEUS Style Performance** series. These packages were developed in cooperation with our partner VIVA MUSICA. The professional entertainers Christoph Alexander and Claus Riepe have now put together another sonorous style and preset package for your SEMPRA with a lot of experience and love of detail.

The ASP 2 also uses the 36 CA live sounds from the first ASP 1 package. For those who don't (yet) use the first package, we have added these sounds! (ASP 1 is therefore not a prerequisite for playing ASP 2 software!)

The AMADEUS Style Performance 2 offers you:

- 36 more fantastic ASP styles, each with 4 dynamic variations, intros and endings, versatile!
- 36 matching ASP-SONGS with example presets for direct play!
- 10 SONGs with title-related ASP example presets
- and the 36 CA live sounds from the ASP 1 package (for accompaniment and live play)!

## requirements

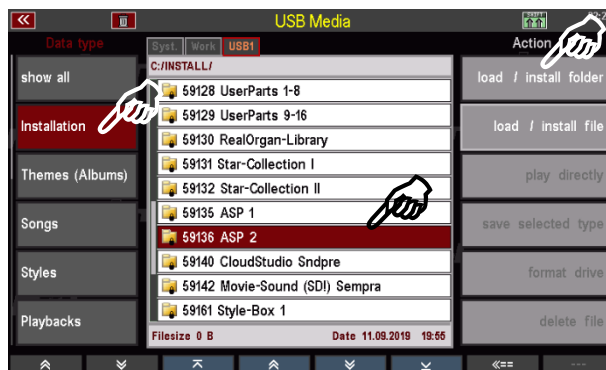
To ensure that the presets sound exactly as they were programmed, your SEMPRA should be equipped with the Drawbar sound module **RealOrgan 2.0** and the **DSP extension** for Amadeus (Art. No. 41115).

If these extensions are not available, there may be slight deviations in some presets if drawbar sounds or Amadeus effect sounds (FX sounds) have been used.

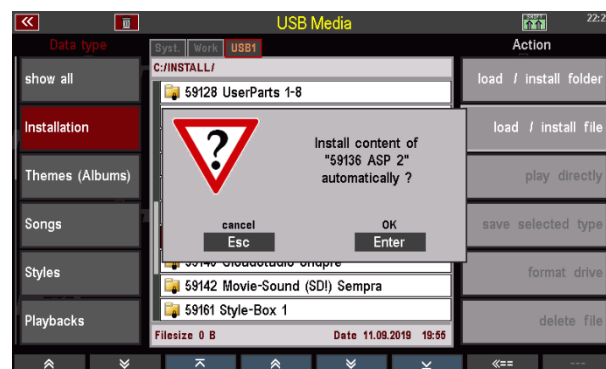
## Installation

In addition to the styles and SONG presets, the ASP 2 also includes a sound bank with 36 new sounds and the corresponding sound preset bank for your SEMPRA. All ASP 2 data is installed into the instrument from the USB stick belonging to your SEMPRA with the factory data:

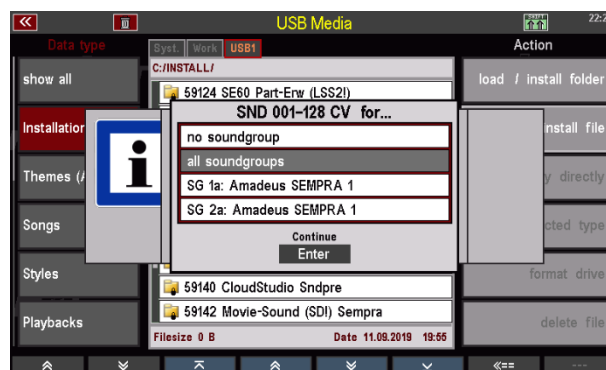
- Insert the USB stick into one of the USB sockets on your SEMPRA.
- Press the USB button to open the USB menu in the display.
- Tap on the **Installation** data type on the left (the field is displayed in red).
- Use the data wheel or the **up/down cursor keys** to move the cursor to the **"59136 ASP 2"** folder (do not open the folder!).
- Tap on the **"Load/install folder"** field on the right.



- The display asks if you really want to install the data. Confirm with **[Enter]**.
- The data will now be loaded. You can then exit the USB menu again (press **[ESC]** or **[USB]**).



- Now the ASP-2 styles are loaded first (see display).
- Then the sound data for the AMADEUS sound system(s) are loaded. If your organ is equipped with several AMADEUS sound systems, the display will ask you in which sound system the sound data should be installed. Select **"All sound systems"** and confirm with **[Enter]**.



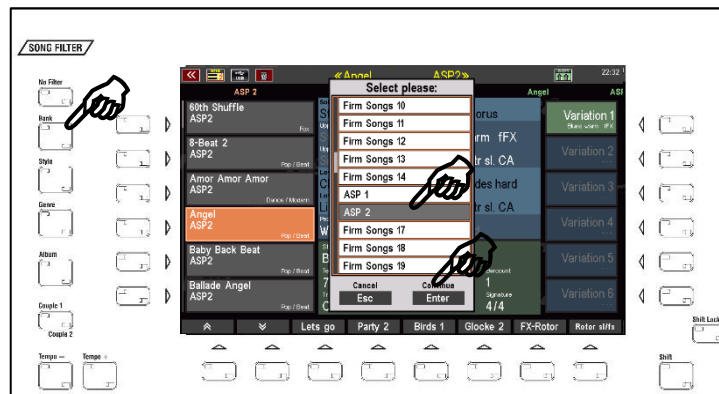
- After the sound data the Sound Presets and the SONGS of the ASP 2 are loaded. After that the installation is finished.

The ASP 2 data is now loaded and can be used.

**Attention: Please** note that factory data, including ASP 2, are always installed for specific accounts. If you use additional user accounts on your SEMPRA and the ASP 2 data is also to be used in these accounts, you may have to perform the installation again for these additional accounts!

## Where can I find the ASP 2 data?

The **ASP 2 SONGS** with the example presets can be found in the **Firm SONG bank 16 "ASP 2"** (internal bank no. 116). Call up this bank e.g. via the **SONG filter** button **[Bank]** (press twice if not already selected) and then scroll to the corresponding bank position.



Confirm with **[Enter]**. The SONG list on the left of the display now shows the ASP 2 SONGS.

Alternatively, you can call the **STYLE BASICS** genre for the SONG list. All **ASP 2 SONGS** are assigned to this genre.

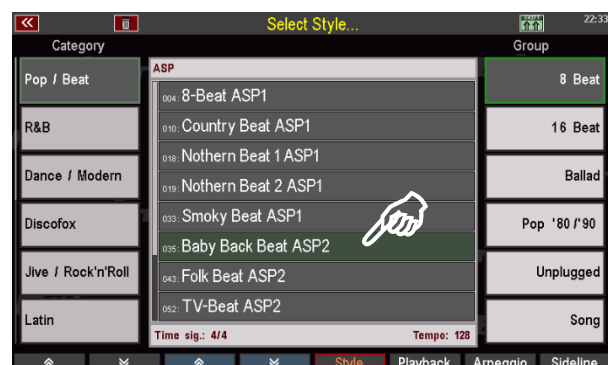
Press the **SONG Filter** button **[Genre]** (press twice if necessary, if not already selected) and select the genre **"Style Basics"** from the list.



Confirm with **[Enter]**. The SONG list on the left now shows the SONGS of the genre "Style Basics", here among others the ASP SONGS.

SONGS of ASP packages can be identified by the abbreviation **ASP1** or **ASP2...** in the SONG name.

The **ASP2-STYLES** occupy the Firm-Stylebank 11 (ASP) and a few positions of the style bank 10 (VSP\_ASP). They are assigned to the corresponding categories and sub-groups in the style selection. You can recognize ASP styles in the style selection by the abbreviation **ASP1** or **ASP2** in the style name.



## Overview AMADEUS Style Performance 2

### STYLES (Firm-Style-Banks 10 and 11)

<b>Bank</b>	<b>Number</b>	<b>Name</b>
110	003	Pop Ballad 2 ASP2
110	004	Pop Beat ASP2
110	005	Tender Easy ASP2
110	006	Schlager Mix ASP2
110	007	Slow Rock 2 ASP2
111	034	60s Shuffle ASP2
111	035	Baby Back Beat ASP2
111	036	Ballade Angel ASP2
111	037	Christmas Waltz ASP2
111	038	Country-Fox ASP2
111	039	Country Shuffle 2 ASP2
111	040	Dixie 20er ASP2
111	041	Fast Shuffle 2 ASP2
111	042	FI-Discofox 2 ASP2
111	043	Folk Beat ASP2
111	044	Jive ASP2
111	045	Konzert Walzer ASP2
111	046	Night Time ASP2
111	047	Organ-Quickstep ASP2
111	048	Paloma Rumba ASP2
111	049	Party Swing ASP2
111	050	Spanish Rumba ASP2
111	051	Steel Swing ASP2
111	052	TV-Beat ASP2
111	053	8-Beat 2 ASP2
111	054	Barry Disco ASP2
111	055	Country Rock ASP2
111	056	Country Boogie ASP2
111	057	Disco Survive ASP2
111	058	Glorias Disco ASP2
111	059	Iglesias Disco ASP2
111	060	Lion Ballad ASP2
111	061	Mid Shuffle ASP2
111	062	Nothern Beat 3 ASP2
111	063	Moore Blues ASP2
111	064	Nothern Shuffle 2 ASP2

## SONGS (Firm-SONG Bank 16: ASP2)

Bank	Number	Name	
116	001	Spanish Rumba	ASP2
116	002	Paloma Rumba	ASP2
116	003	Night Time Piano	ASP2
116	004	Steel Swing	ASP2
116	005	Organ Quick	ASP2
116	006	Country Fox	ASP2
116	007	Dixie 20er	ASP2
116	008	Jive 2	ASP2
116	009	Konzert Walzer	ASP2
116	010	Christmas Waltz	ASP2
116	011	Folk Beat	ASP2
116	012	TV Beat	ASP2
116	013	Ballade Angel	ASP2
116	014	FI-Discofox 2	ASP2
116	015	Fast Shuffle 2	ASP2
116	016	CountryShuffle 2	ASP2
116	017	Baby Back Beat	ASP2
116	018	60th Shuffle	ASP2
116	019	Party Swing	ASP2
116	020	Moore Blues	ASP2
116	021	Pop Beat	ASP2
116	022	Tender Easy	ASP2
116	023	Pop Ballad 2	ASP2
116	024	Lion Ballad	ASP2
116	025	Glorias Disco	ASP2
116	026	Iglesias Disco	ASP2
116	027	Mid Shuffle Org	ASP2
116	028	Nothern Shuffle 2	ASP2
116	029	8-Beat 2	ASP2
116	030	Barry Disco	ASP1
116	031	Disco Survive	ASP2
116	032	Slow Rock 2	ASP2
116	033	Nothern Beat 3	ASP2
116	034	Schlager Mix	ASP2
116	035	Country Boogie	ASP2
116	036	Country Rock	ASP2
116	037	La Paloma	ASP2
116	038	Angel	ASP2
116	039	Buona Sera	ASP2
116	040	Only you	ASP2
116	041	Every Breath	ASP2
116	042	Love me tender	ASP2
116	043	Sailing	ASP2
116	044	Amor Amor Amor	ASP2
116	045	Rote Lippen	ASP2
116	046	You`re the first the last	ASP2



**ASP Sounds (in Soundbank 110):**

Live Grand	CA
Pop Piano	CA
Rock Grand	CA
E-Piano Vint.	CA
Chorus-EP	CA
Chorus-EP DX	CA
Rotor schnell	CA
Cl.Org.4P FX	CA
Patch Bars	CA
Fr.Accordion	CA
It.Accordion	CA
Dt.Akkordion	CA
Nyl.Gt +slide	CA
Nyl.Folk+Slid	CA
JazzAcc-Git	CA
Telecaster Gt	CA
60th Jazz Gt	CA
Chord Guitar	CA
Muted E-Guit.	CA
Unplugged Git	CA
Upright-Bass	CA
E-Bass	CA
Warm-Bass	CA
CD-Streicher	CA
Manto-Str sl.	CA
Git-String	CA
Huh-String	CA
Backgr.Choir	CA
Trumpet Blare	CA
Brill.Tr.Duo.	CA
Swell Brass	CA
Brass dyn.	CA
Sax Section	CA
Short Saw	CA
Fantasy Synth	CA
SynBells-Pad	CA



**BÖHM Orgeln**

KEYSWERK Musikelektronik GmbH

Warbersche Str. 32

31675 Bückeburg

Tel.: 05722 905088

**Internet** [www.boehm-orgeln.de](http://www.boehm-orgeln.de)

**E-Mail** [info@boehm-orgeln.de](mailto:info@boehm-orgeln.de)